

SUSHI CASE

HNC SERIES



MODEL NAME

HNC - 120AC - R/L
 ① ② ③ ④ ⑤ ⑥

- ① High Grade
- ② Counter Showcase
- ③ Width(cm) 120,150,180,210
- ④ Development Order A
- ⑤ Export Model
- ⑥ Unit Location R:Unit on right L:Unit on left



HNC-150AC-R

- Top glass angles down.
- Ceiling easier to clean.
- NSF approved thermometer.
- 30 °C maximum ambient.
- Large diameter 25mm drains at operator side.
- Load line is 88mm above the floor.
- Larger front to back interior, 275mm.
- Interior floor has a radius at all four sides.
- Self-contained refrigeration unit -easy to install.
- Condenser airflow is in the back and out the side.
- Large diameter upper evaporator with tin plating.
- Solid food plates with radius groove to fit sushi foods.
- Larger condenser face area improves cooling performance.
- Slightly taller doors with plastic seal at end, opposite of the handle.
- Food plates can be turned upside down and used to improve cooling performance.

COUNTER TOP REFRIGERATED DISPLAY CASE / DIMENSIONS (mm) - CONNECTIONS

VARIATIONS



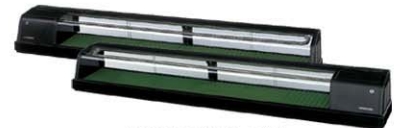
HNC-120AC-R(L)



HNC-150AC-R(L)



HNC-180AC-R(L)



HNC-210AC-R(L)

- Top glass angles down for easy viewing and cleaning.
- Larger condenser face area improves cooling performance.

R - 134a REFRIGERANT

SERVICE

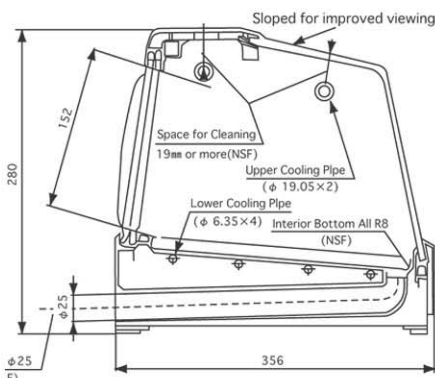
Removable/cleanable air filters.

OPERATING LIMITS

Ambient Temp Range	10-30°C
Voltage Range	198-242V
Saturation Temp (30°C Ambient Temperature)	4°C

ELECTRICAL

1/220-240/50



HOSHIZAKI COUNTER SHOW CASE

Model	HNC-120AC-R(L)	HNC-150AC-R(L)	HNC-180AC-R(L)	HNC-210AC-R(L)	
AC Supply Voltage	1 Phase 220-240V 50Hz				
Power Supply Capacity	0.67kVA(2.8A)				
Rated Amperage	1.1A				
Starting Amperage	10A				
Electric Consumption	150W				
Saturation Temperature	Approx. 4°C(Ambient Temp. 30°C, No Load)				
Net Capacity (L)	42	57	72	87	
Ambient Temperature	10-30°C				
Voltage Variation	Rated Voltage ±10%				
Exterior Dimensions (W-D-Hmm)	1200-345-280	1500-345-280	1800-345-280	2100-345-280	
Interior Dimensions (W-D-Hmm)	845-288-157	1145-288-157	1445-288-157	1745-288-157	
Exterior	Glass, ABS Plastic, PVC Plastic, Galvanized Steel				
Interior	Glass, ABS Plastic, Stainless Steel				
Insulation	Polyurethane Foam				
Refrigeration System	Convection Cooling				
Sliding Door	2 pieces	4 pieces			
Net Weight/Shipping Weight (kg)	30/42	36/51	42/60	48/69	
Shipping Dimensions (W-D-Hmm)	1280-413-465	1580-413-465	1880-413-465	2180-413-465	
Accessories	Food Mount	3 pieces	4 pieces	5 pieces	6 pieces
	Plug	2 pieces	4 pieces		
	Vinyl Hose	1 piece			
	Joint	2 pieces			

Warranty : One year-Parts and Labor on entire unit. Excluding glasses, doors and exterior damages.